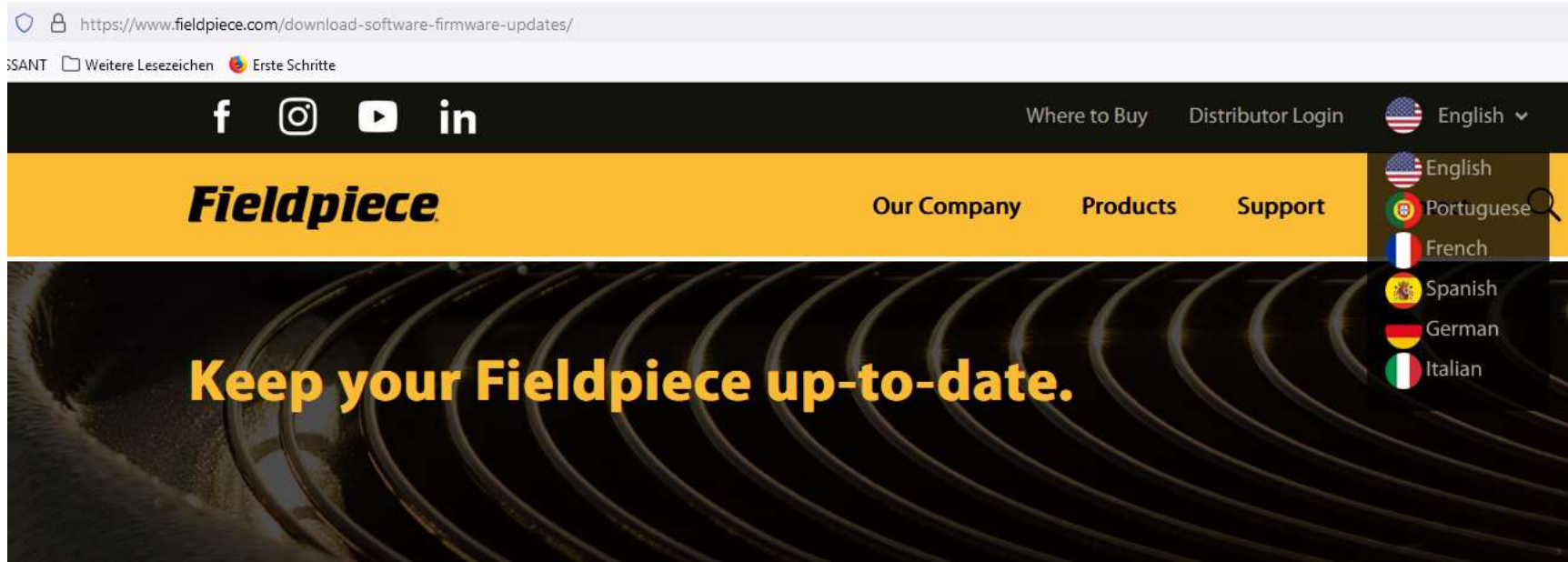


SMAN

Instructions for Firmware Update

(June 2022)





Fieldpiece

Home > Support > Software & Firmware Updates

We occasionally release updates to fix bugs, add new refrigerants, or improve the software and firmware in our Fieldpiece tools. Use the links below to download what you need to make your Fieldpiece products perform even better.

If you [register your device](#) with us, we can email you when updates are available.

To update [JL3RH Job Link® System Psychrometer Probe](#), please use the Job Link® System app. Watch this [quick video](#) on how to update the firmware.

Some Updates May Require Windows 7/10. Not available for Macintosh or Linux operating systems.

SM480V – Firmware Update

Download Latest Firmware

Download the latest firmware:

www.fieldpiece.com

-> Support

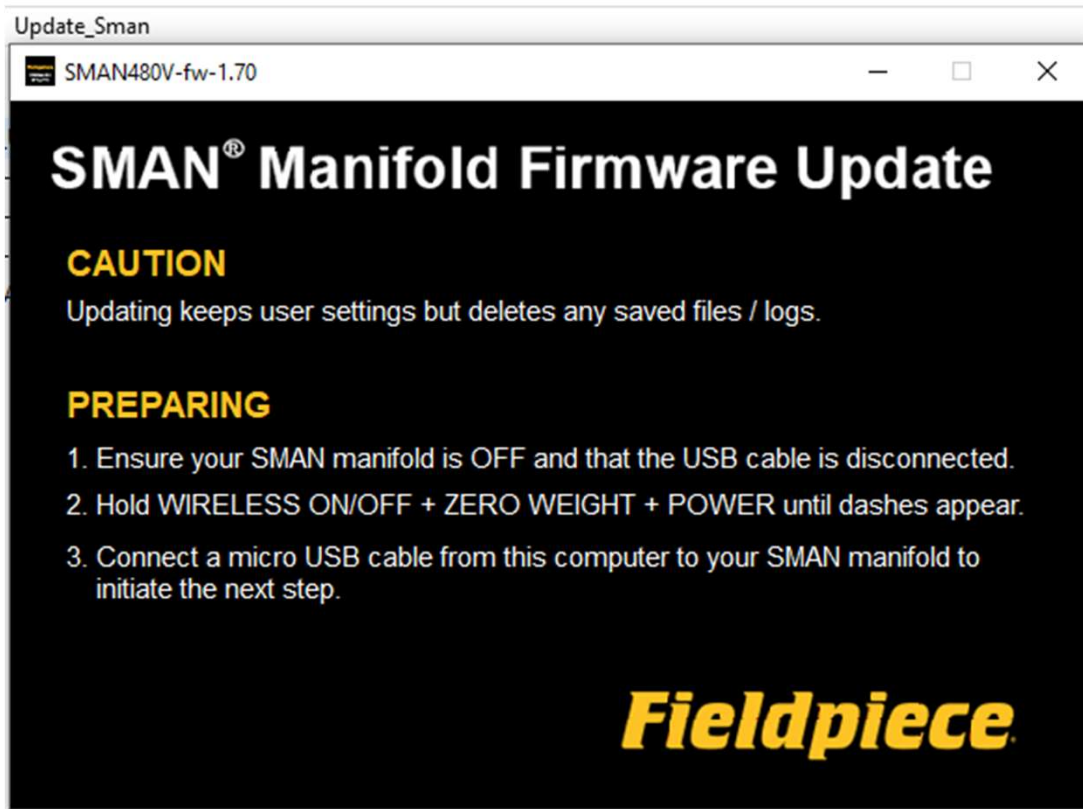
-> Software & Firmware Updates

You need a **Micro-USB-cable**, like this:



Start the software:

Double click on file: *e.g. SM480V 1.70-1.37.exe* (june 2022)
and follow the instructions:



Fieldpiece

1.)

The SMAN must be switched OFF and the micro-usb disconnected!

Power off SMAN and unplug USB cable.



2.) Hold the buttons until dashes appear.

The little bar is moving from left to right, again and again!

Hold WIRELESS ON/OFF + ZERO WEIGHT + POWER button dashes appear.

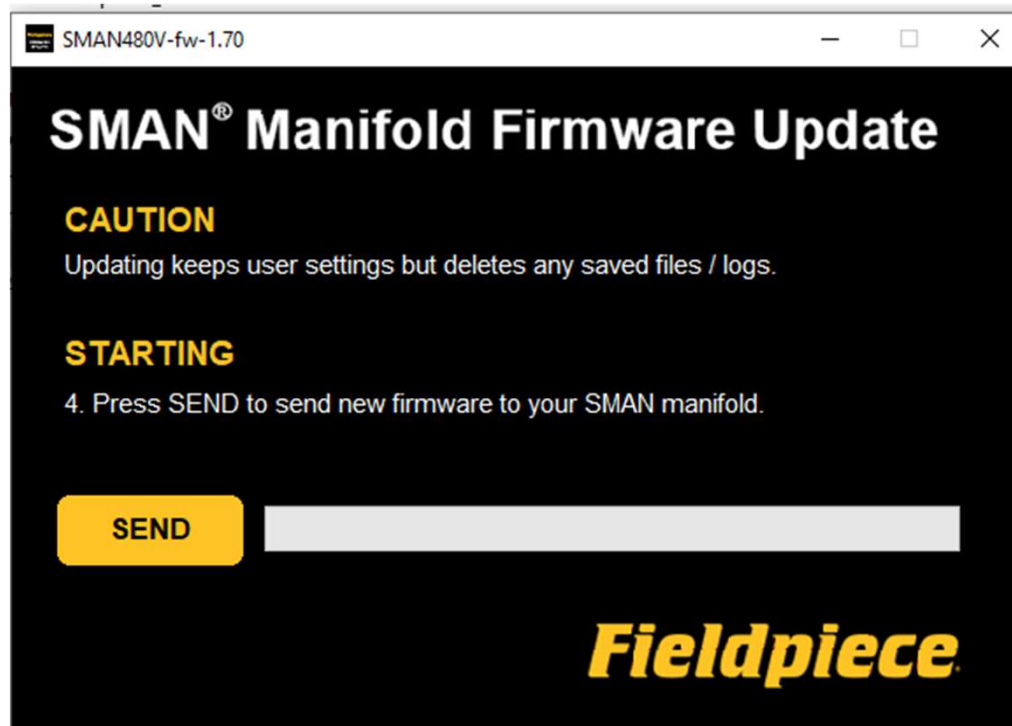


3.)

Connect now the SMAN with your PC



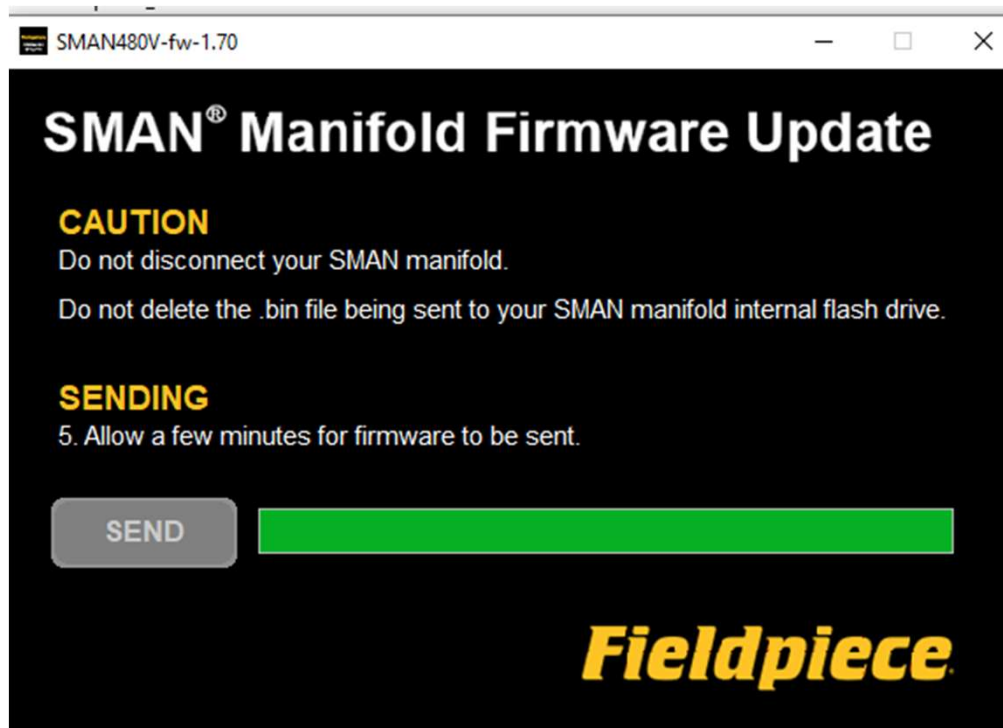
After you've connected your SMAN to your PC the next window appears automatically:



Press now the button „SEND“!

Wait until the next window appears (appr. 5 minutes) !

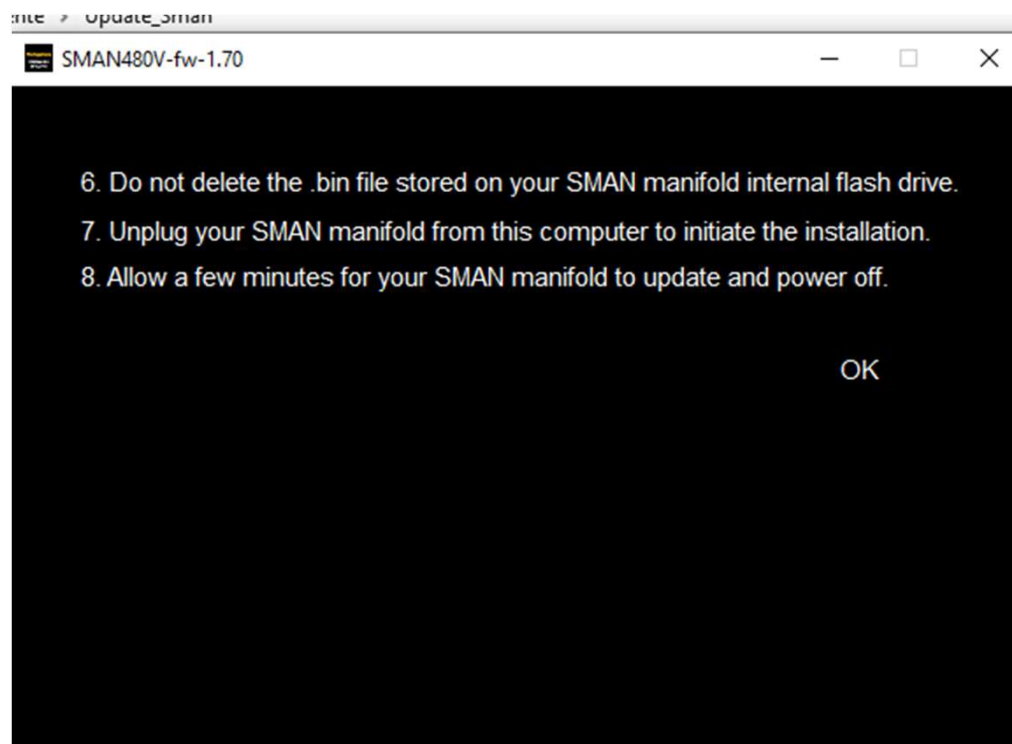
Do not disconnect your SMAN !!!!
Please wait!



Please wait a few minutes!

Do not interrupt the process!

The next windows appears:



Now you can **unplug the usb-cable.**
But **don't switch off the SMAN!!!!**

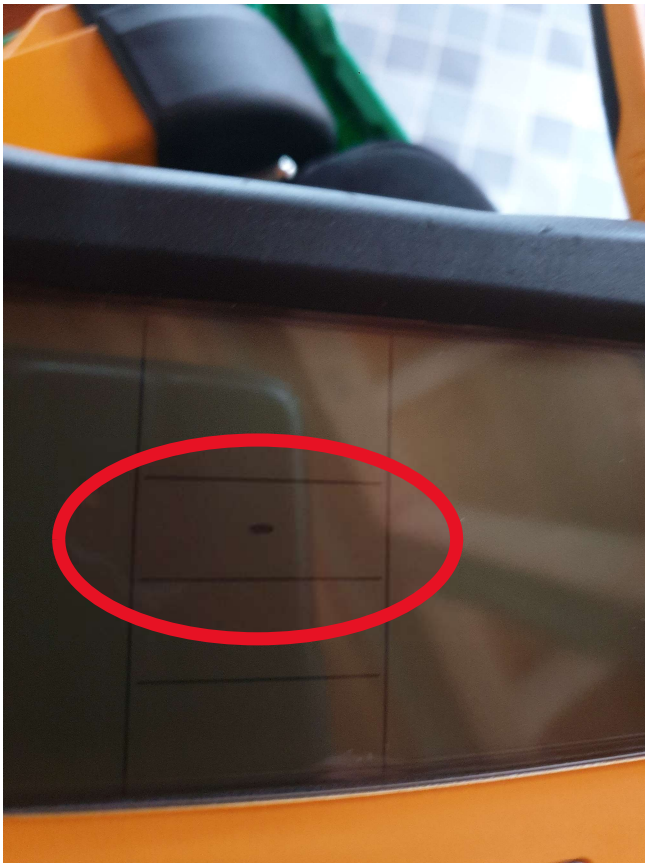
You can see the dashes. The little bar is going from left to right. Again and Again. That means, the SMAN is still in installation-phase!



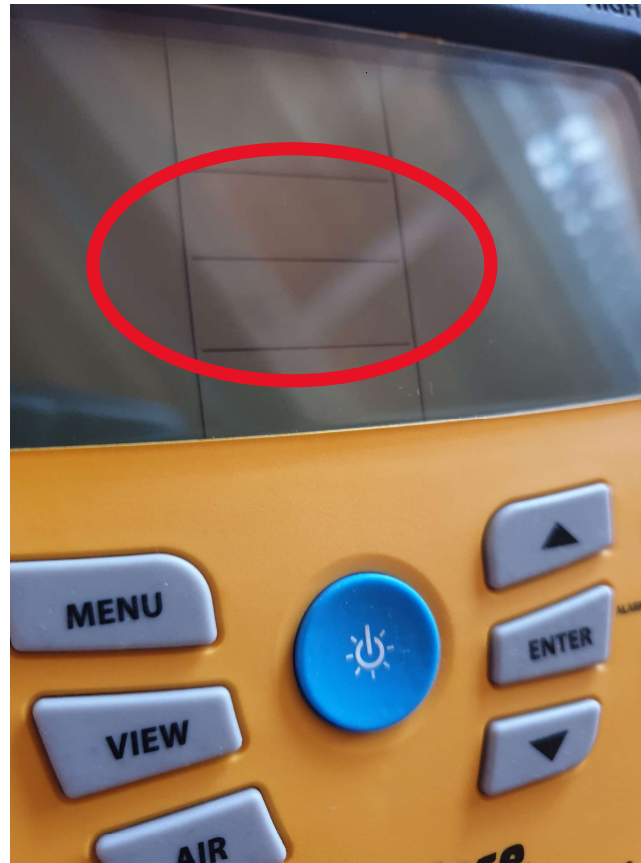
This phase lasts about **5 minutes !!!**

The installation is finished when the small bar has disappeared.

Before



After



Now you are ready! Update is done!

You can switch on your SMAN by holding pressed the Light-Button for a few seconds.

If you push the Light-Button 1x, the backlight is on!

The Update **keeps all your settings**, but has deleted any saved files & logs!

You can **change the language**:
MENU -> Language (saving with ENTER)
Exit with 1x button MENU

