

Electronic Refrigerant Charging Scale



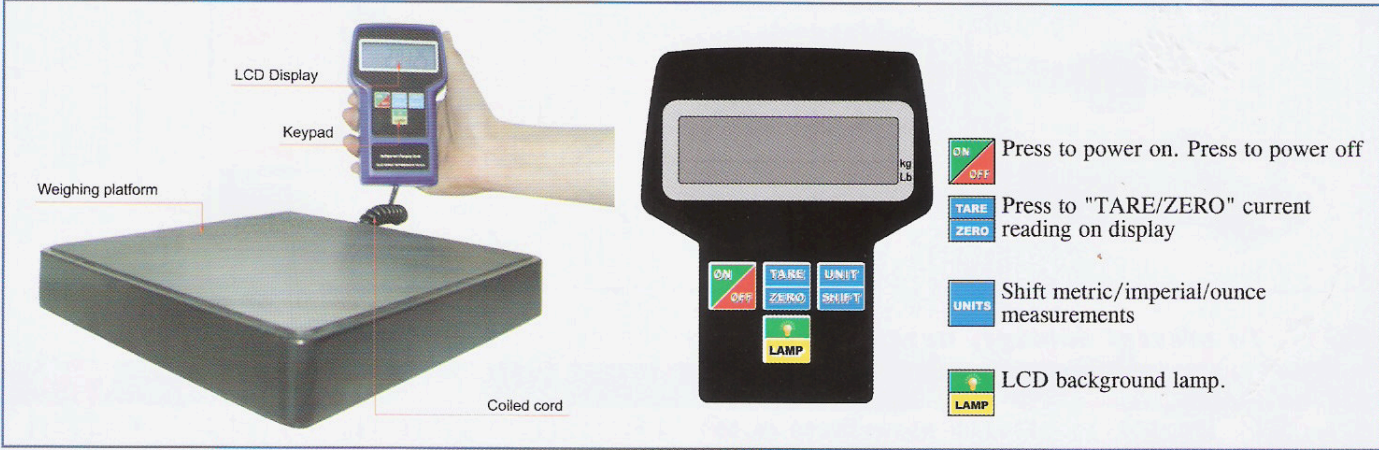
RCS-7010/RCS-7020/RCS-7030

Introduction

RCS series refrigerant charging scales used for refrigerant charging, recovery & weighing of commercial A/C, auto A/C, refrigeratory systems. Portable carrying case with 223cm x 223cm platform. High capacity up to 100kgs (220lbs). High accuracy of +/-5g (0.01lb). high-visibility LCD display 66mm x 20mm & 67mm x 23mm optional. Flexible 6 inches (1.83m) coil design. Long life 9V batteries.

ITEM	RCS-7010	RCS-7020
Range Of Weight	0.000-70.000 kg or 0.000-154.000 lbs	0.000-100.000 kg or 0.000-220.00 lbs
Accuracy	± 0.5% of reading	± 0.5% of reading
Resolution	5 g /0.01 IB	5 g /0.01 IB
Unit	KG / LB	KG / LB
Power Supply	9VDC	9VDC
Operting Temp	32F To 113F (0℃ To 45℃)	32F To 113F (0℃ To 45℃)
Platform Size	8-3/4" x 8-3/4" 223x223mm	8-3/4" x 8-3/4" 223x223mm
Batter Life	30 Hours Continuous Use	30 Ho... Continuous Use
Weight	2.485KG (5.47 OZ)	2'... (5.47 OZ)

Scale Frame Drawing



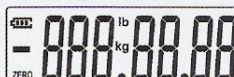
RCS-7010/7020



Unit Shift:KG/LB
Lcd Size:66mm x 20mm
5 Digits Display



RCS-7030/7040

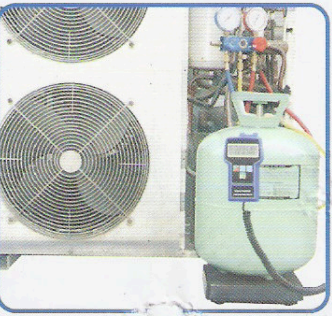


Unit Shift:KG/LB/OZ
Lcd Size:67mm x 23mm
7 Digits Display

Operation Instructions

1. Remove scale from case and place on a smooth flat surface.
2. Press the **ON/OFF** key to power the scale. The LCD should display 0.00/0.000.
3. Use the **UNIT/SHIFT** key to choose between Kilograms (Kg) or Pounds (Lbs)
4. When charging refrigerant, place cylinder in the center of scale (do not place a cylinder over largest weight which scale can measure as damage may occur to the scale!) Attach your charging hose according to generally accepted HVAC practices, bleed air from your hose, and hit the **TARE** key to zero out the scale. Refrigerant charge will be displayed in negative numbers.
5. When recovering refrigerant, place tank in the center of the scale. Scale will display gross weight of tank and recovered refrigerant.

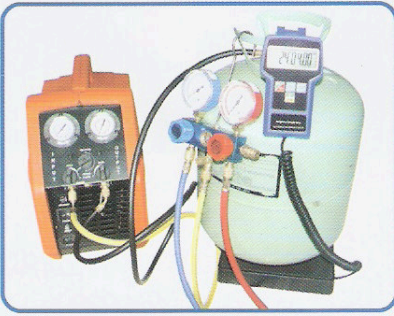
- Battery Power Low
- Scale Overload



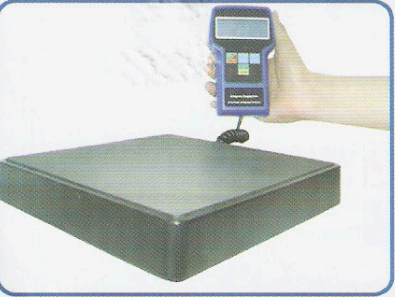
Charging System



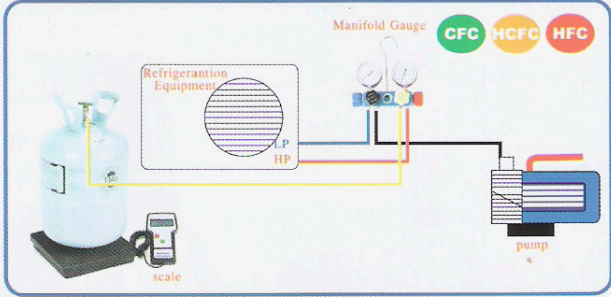
Charging for Auto Refrigeration System



Recovery



Removable Platform



Charging Refrigerant

NOTE:To prevent damage, never exceed the rated capacity of the RCS-7030/RCS-7040.

ITEM	RCS-7030	RCS-7040
Range Of Weight	0.000-30.000kg or 0.000-66.000 lbs or 0 IB.00.00 oz-66 IB 00.00 oz	0.000-100.000kg or 0.000-220.000 lbs or 0 IB.00.00 oz-220 IB 00.00 oz
Accuracy	± 0.1% of reading	± 0.5% of reading
Resolution	1 g / 0.003 IB / 0.04 OZ	5 g / 0.010 IB / 0.25 OZ
Unit	Kg/Lb/OZ	Kg/Lb/OZ
Power Supply	9VDC	9VDC
Operting Temp	32F To 113F (0℃ To 45℃)	32F To 113F (0℃ To 45℃)
Platform Size	8-3/4" x 8-3/4" 223x223mm	8-3/4" x 8-3/4" 223x223mm
Batter Life	30 Hours Continuous Use	30 Hours Continuous Use
Weight	2.485KG (5.47 OZ)	2.485KG (5.47 OZ)